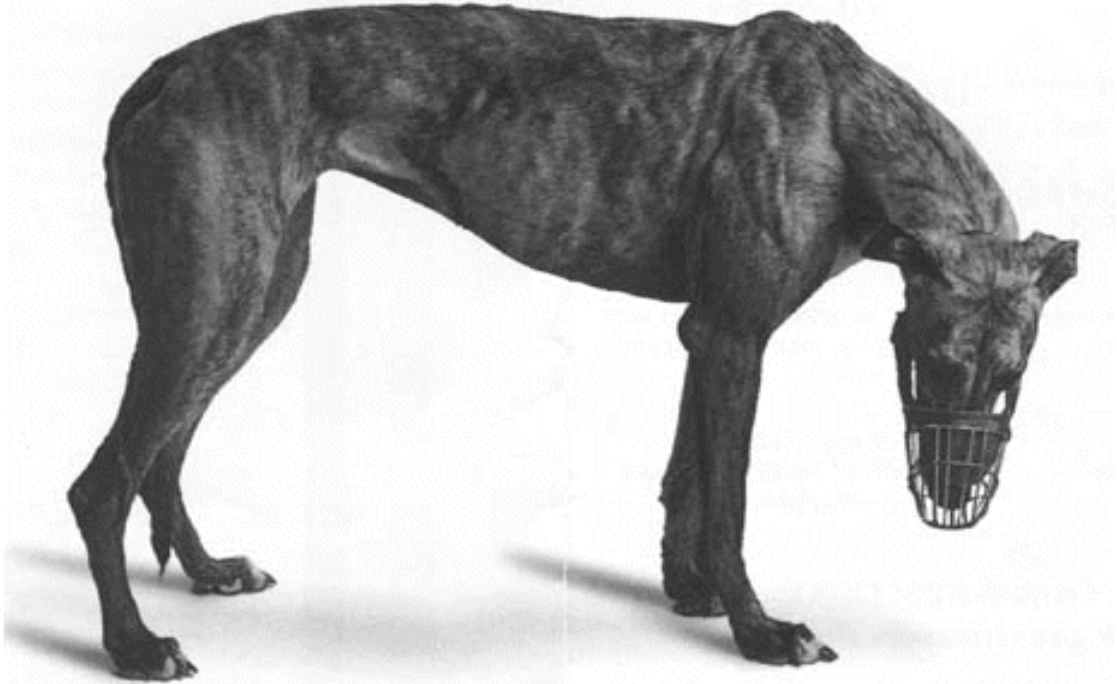


Has she just lost the race for life?



Tens of thousands of dogs are disposed of by the greyhound racing industry every year. Many of them suffer horrifically. Most of them are put to death.

Say “No” to Greyhound Racing!

Don't go to it. Don't bet on it.

Support our campaign to end the slaughter!

- Over 15,000 greyhounds, bred for the British dog racing industry, are put to death every year, after being considered 'not good enough' for racing, or when their 'careers' on the track come to an end, either through age or injury.
- This includes thousands of pups killed before they even reach the tracks, because they don't come up to the required standard.
- This means the existence of each of Britain's major greyhound stadiums is responsible, on average, for the slaughter of over 500 greyhounds annually.
- Rescue groups do excellent work in trying to find homes for 'unwanted' greyhounds, but can only save the lives of a minority of dogs bred for racing.
- Greyhounds running on British tracks sustain thousands of injuries every year, many of them serious, and 10% of dogs that race do so while already injured.
- In recent years, national media exposés have highlighted the wholesale slaughter of ex-racing dogs and several mass graves containing the bodies of shot greyhounds have been discovered in various parts of the country.
- Greyhound racing also causes the deaths of many thousands of other dogs apart from greyhounds, as places in homes and rescue kennels, which could go to other stray and 'unwanted' dogs, are taken up by greyhounds got rid of by the racing industry, meaning that those other dogs are 'put down' because there is nowhere for them to go.
- To prevent this massive slaughter and suffering, commercial greyhound racing must be abolished, as has already happened in many parts of the USA, where six states have banned it since 1993.
- In the meantime, PLEASE AVOID ATTENDING GREYHOUND TRACKS OR BETTING ON GREYHOUND RACING, so that it comes to an end through lack of financial support.

HOW YOU CAN HELP

- ◇ **Don't attend greyhound tracks and never bet on a greyhound race.**
- ◇ **Tell your family and friends. Ask them to boycott greyhound racing too.**
- ◇ **Write to your MP and newspaper letter pages about the suffering and slaughter caused by greyhound racing. Urge the public to boycott it.**
- ◇ **If you see a business or charity promoting or sponsoring greyhound racing, write to them to protest. Ask us for leaflets to send to them.**
- ◇ **Collect signatures for our petition to abolish greyhound racing. Contact us for a petition form and more copies of this leaflet to distribute.**
- ◇ **Ask us to put your local Greyhound Action group in touch with you, so you can help them with information stalls, protests outside greyhound tracks etc.**
- ◇ **Send a donation to help our campaign to protect greyhounds from suffering.**
- ◇ **Contact us if you can offer a greyhound a loving home.**

Greyhound Action, PO Box 127, Kidderminster, DY10 3UZ

Tel: 01562 700 043 Website: www.greyhoundaction.org.uk

Fax: 0870 138 3993 E-mail: info@greyhoundaction.org.uk

